

**EAST CENTRAL COLORADO  
RESOURCE CONSERVATION AND DEVELOPMENT AREA  
(RC&D)**

**AREA PLAN  
EAST CENTRAL COLORADO RC&D COUNCIL, Inc.  
2009-2013**

**State of Colorado**

**Assisted by**

**U.S. Department of Agriculture  
Natural Resources Conservation Service**

**Sponsors of the East Central Colorado RC&D Council, Inc.**

**Cooperating Federal, State, and Local agencies.**

**Prepared under permanent authorization  
of the  
Farm Security and Rural Investment Act of 2002**

**U.S. Department of Agriculture  
Natural Resources Conservation Service**

**Hugo, Colorado**

# TABLE OF CONTENTS

<b>Section</b>	<b>Page #</b>
<b>Introduction</b>	<b>3</b>
<b>Acknowledgments</b>	<b>4</b>
<b>Organization Overview</b>	<b>4</b>
<b>Resource Needs and Opportunities</b>	<b>7</b>
<b>Summary of the RC&amp;D Area Plan</b>	<b>8</b>
<b>Goals, Objectives and Strategies</b>	<b>8</b>
<b>Current &amp; Potential Partnerships with USDA &amp; Others</b>	<b>13</b>
<b>Linkages to the NRCS Strategic Plan</b>	<b>14</b>
<b>Appendix A</b>	<b>14</b>
<b>Required Clauses &amp; Signatures</b>	<b>15</b>
<b>Exhibits:</b>	
<b>“A” Demographics by County</b>	
<b>“B” Survey Results</b>	
<b>“C” Watershed Info</b>	
<b>“D” Photo’s of Area Meetings</b>	

## **INTRODUCTION**

This document is the revised long range plan, referred to hereafter as the 'Area plan', for the East Central Colorado Resource Conservation and Development Council, Inc. (ECCRCD).

The East Central Colorado RC&D Area plan was developed by soliciting public input through organized public meetings in six locations across the area. A survey was presented at these meetings, in addition, to one-on-one interviews led by council members who utilized the survey at local club and committee meetings within their area of representative. The coordinator presented the survey to USDA Service Center staff in the representative counties. The counties served by this Area plan include: Cheyenne, Elbert, eastern El Paso, Kit Carson, and Lincoln.

The purpose of the plan is to serve as a guide where community priorities and goals are identified from which the council can prepare the annual plan of work. Responsibility to attain these objectives/goals falls upon local sponsors, and the RC&D council, in addition to local, state and federal agencies working cooperatively. The ECC RC&D encourages leadership for projects to be assumed at the local level by organizations with vested interests and working knowledge of the problems. The council has reinstated a 'projects committee' to work more effectively with community leaders. A council priority is to improve coordination of projects and communication among communities with similar goals. Coordinating efforts to make a regional impact will facilitate partnerships for the wise use of natural resources while improving economic stability in local communities.

### **Brief explanation of the RC&D program**

Originally authorized by congress by the Food and Agricultural Act of 1962, congress approved permanent authorization of Resource Conservation and Development areas in the Farm Security and Rural Investment Act of 2002. Technical assistance and federal program administration is provided by the United States Department of Agriculture (USDA)- Natural Resources Conservation Service (NRCS). Some financial assistance is received from NRCS through agreements and federal grant opportunities supporting projects scheduled for completion in the annual plan of work. Most of the projects are completed through many combinations of cooperative efforts of private citizens, groups, businesses, grants from foundations, local, state and federal agencies. Voluntary dues are requested by the council from project sponsors to support the administrative assistant position. This document serves as an agreement between NRCS and the East Central Colorado RC & D Council, Inc.

## **ACKNOWLEDGMENTS**

The East Central Colorado RC&D council hereby acknowledges and thanks its Executive Council volunteers and the individuals from each community group that shared information, attended meetings, and completed surveys. Appreciation is given to the officials from local units of government and past project partners that contributed to the development of this area plan. We look forward to working with these groups and individuals in implementing this revised RC&D Area Plan in 2009 and beyond.

### **Sponsors for 2008**

Cheyenne County	K.C. Electric	Town of Arriba
Lincoln County	Mountain View Electric	Town of Bethune
Kit Carson County	Agate CD	Town of Burlington
Elbert County	Burlington CD	Town of Calhan
Agate School	Cheyenne CD	Town of Cheyenne Wells
Agate Mutual Telephone Assn.	Double EI CD	Town of Flagler
Arriba-Flagler School	EI Paso CD	Town of Hugo
Dynamic Dimensions	Flagler CD	Town of Kiowa
Eastern Colorado Bank	High Plains CD	Town of Kit Carson
Eastern Slope Rural Tele	Prairie CD	Town of Limon
Eastern Plains Intertribal Assn.	Cheyenne Wells Rec.	Town of Seibert
Field of Dreams Project	Ellicott Fire District	Town of Simla
First National Bank of Hugo	Eastern Plains Players	Town of Stratton
Farm Credit/Southern Colorado	High Plains Bank	Lincoln Comm. Hospital
Genoa-Hugo School	Hugo Fire/Ambulance	Prairie Horizons
	VFW Joe Will Post 6612	

## **ORGANIZATION OVERVIEW**

**Mission:** Provide a continuing program to encourage enrichments of the rural lifestyle for the communities and citizens of the East Central Colorado RC&D region. (per council review on 12/2009)

**Vision:** Neighbors helping neighbors accomplish economic, social and environmental benefits for their communities. (per council review on 12/2009)

### **Background and Council Structure**

On March 26, 1969, an informational meeting was held with 24 interested citizens from Eastern Colorado to establish an RC&D project area to include 5,571,840 acres. By April 1970, the application for East Central Colorado RC&D project area had been approved by the Governor of Colorado and was sent to Washington D.C. for approval. National approval and funding was not received until October 1976, but projects were beginning by June 1970. Support from USDA Soil Conservation Service and various state and federal agencies was vital to the tremendous successes of the first six years. By July 1972 there were eight water and sewer projects in various stages and five housing projects underway with local support. The ECCRCD was incorporated in the State of Colorado in June 1977 and the IRS issued a letter of determination in January 1978 recognizing East Central Colorado RC & D as a 501©3 organization.

The governance of ECCRCD, Inc. is directed by an executive board elected by the members who are sponsors of the organization. At the annual meeting, the ten member executive board is elected for a term of one-year. The executive board of directors is comprised of two members representing each county in the geographic service area.

The sponsorship of the RC&D area is made up of counties, conservation districts (CD), towns, businesses, civic groups, school districts, and individuals. The entire area is included in state designated enterprise zones, having tax incentives and investment credits for new business and expansion.

## **Overview of the Area**

The East Central Colorado RC&D Area originally included Elbert, Lincoln, Cheyenne, Kit Carson counties and the northeast corner of El Paso County. In 1989 the East Central Colorado RC&D Area expanded to include the entire eastern half of El Paso county as far west as Peyton Highway, bringing the total area to 6,226,160 acres. In 1997, an expansion proposal to include Washington County was approved. In 2006 Washington County was realigned to the adjacent Northeast Colorado RC& D area.

The area is bordered on the east by the Kansas line and on the west by the front range of the Rocky Mountains. The east half of the area is a typical plain, consisting of nearly level loamy land and sand hills. The west half has scattered tablelands with many valleys and foothills. Elevation ranges from about 4,000 feet on the east border to 7,000 feet on the west. The semi-arid climate with very low humidity and abundant sunshine with a wide range in temperature makes it a very comfortable place to live. The average annual precipitation ranges from 10 to 18 inches.

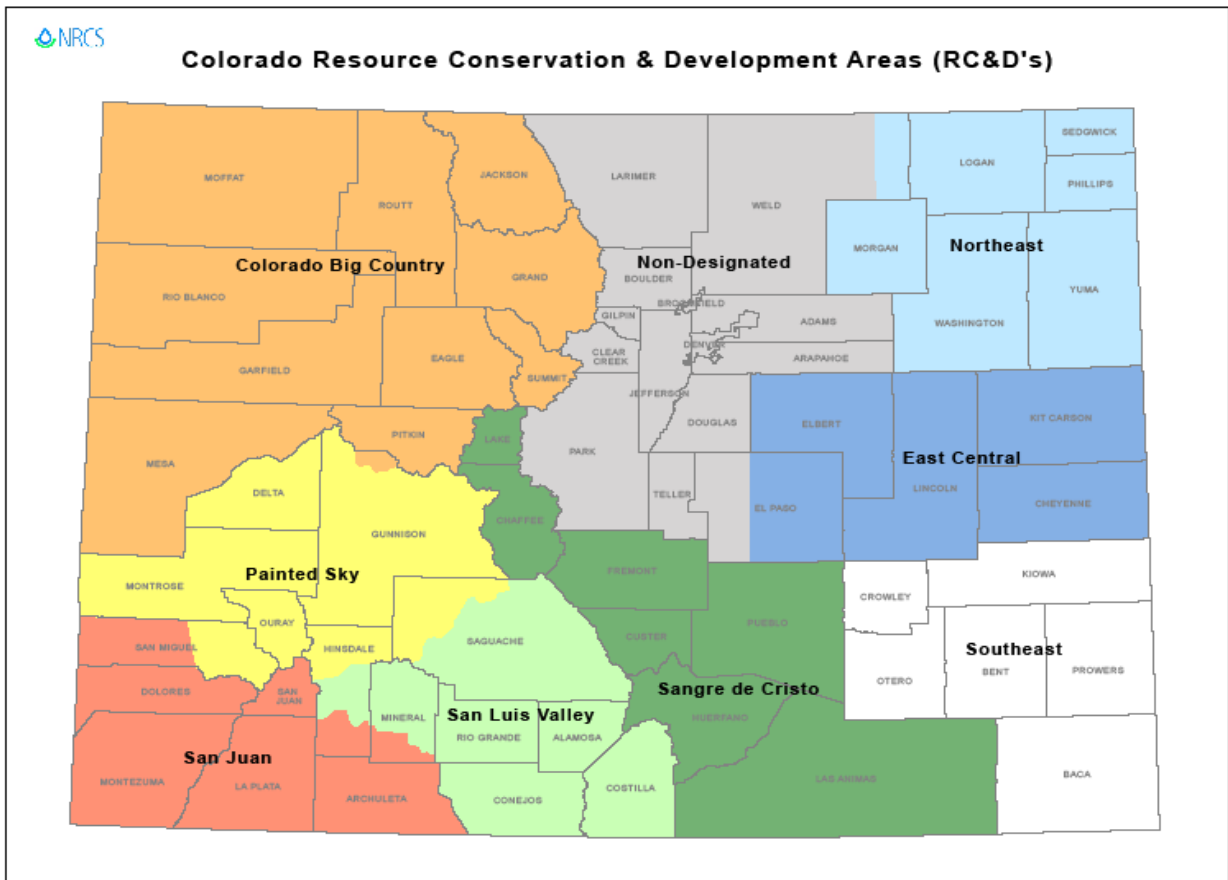
Farming and ranching are the predominant economic activities of the area. Bonny Reservoir, Flagler Lake, Ramah Dam, Kinney Lake, and Karval Dam offer the only water-based recreation sites in or near the area with limited boating and fishing potential.

The area was claimed as a Spanish territory until 1706. It was purchased from France in 1803 as part of the Louisiana Purchase. As a United States possession it was part of the Kansas territory until 1861 when it joined the Colorado territory. The first settlers came to the territory in the 1860's with large droves of cattle and sheep. The building of the Union Pacific and the Rock Island railroads opened the country up to the mass western migration in the 1870's and 80's. Kit Carson, the famous scout, had a trading post in the present community that carries his name in Cheyenne County.

## **Demographics**

Total population in the area is approximately 60,000, (based on 2007 estimates on the census bureau 'Quickfacts' websearch) up from 30,000 in 1990, with the largest municipality being Burlington having a population of 3,678. Many of the communities are unincorporated. The fastest growing county in the area is Elbert, situated southeast of Denver. The growth for Elbert County between 1990 and 2000 was 106%. The majority of the growth was in the western part of the county. El Paso County population and income figures are not separated for the rural portion of the Area. The west part of eastern El Paso County is also experiencing growth with small acreages and

subdivisions. The remaining counties in the area show declining populations from -21% (Cheyenne) to -1.0% Kit Carson.



Primary sources of income in the eastern part of the area are from agriculture and tourism. The median household income for Lincoln, Kit Carson, and Cheyenne ranges from \$36,252 to \$44,053. Retail sales per capita in these counties range from \$4,356 to \$79,791. In Elbert County the median household income is \$77,037 with retail sales per capita being only \$2,369.00. The population of the largest town, Elizabeth, Colorado is 1,529 (2004) with the majority of the 22,720 in the county living on small acreages or subdivisions and commuting, 31 minutes on average, into the city for employment. See 'exhibits' for county by county statistics.

## Natural Resources

**Water** – Surface water quality is good with predominantly intermittent stream flow due to low average annual precipitation ranging from 18” to 11” per year. Groundwater for drinking and irrigation is drawn from the Ogallala aquifer which is declining on average, 1- 2 feet per year within the ECCRCD area. Due to over appropriation in the Republican River Basin, there is currently legal activity between Colorado, Kansas, and Nebraska governing use of surface water and alluvial pumping adjacent to the river basin. Compliance of the compact currently impacts over 4,000 irrigation wells in the region.

**Soil** – Soil textures vary greatly from predominantly loamy soils to pockets of deep sand.

**Air Quality**- Air quality standards are good except for occasional blowing dust. Some concern exists for reduced air quality standards related to sulfur compounds from confined animal feeding operations, natural gas drilling activities, and carbon monoxide concentrations relative to the proximity of Rocky Mountain National Park.

**Plants**-Noxious weeds remain an agricultural economic threat. Colorado noxious weed list can be viewed at: <https://www.colorado.gov/cs/Satellite/Agriculture>

**Animals** – Colorado State Threatened and Endangered species list with listings by county and region is filed in Section I of the Natural Resources Conservation Service Field Office Technical Guide available online at: <http://www.co.nrcs.usda.gov/technical/ecs/ecs-index.html>

**Agriculture** – Counties in the ECCRCD area remain in the top ten counties in the state for winter wheat production and corn production. Other valued crops are oil and confection sunflowers, millet, edible dry beans, and alfalfa hay. Millions of acres of rangeland are utilized for livestock grazing. Most rangeland condition in the area would be classified in ‘fair’ condition by USDA-NRCS standards. Over 50,000 acres of highly erodible land in the Cropland Reserve Program (CRP) will expire in the next three years across the ECCRCD area and are at risk for conversion from grass to cropland.

**Socio-Economic Information** – The general trend across the ECCRCD area is declining population (with the exception of western Elbert County). According to the Comprehensive Economic Development Strategy (CEDS) report from the East Central Council of Local Governments, “ Average earnings, and personal income growth are below the median for all U.S. Counties. Per capita income levels are running above average. U.S. median values are:

- Per Capita Income (2006) = \$26,371
- Average Earnings per Job (2005) = \$30,269
- Annualized Personal Income Change = +2.2%

The region has an aging population and relative dependence upon social security and other retirement related income sources. The minority population within the permanent residential community of this region is very limited. Between 95-99% of permanent residents are non-hispanic white.”

## **RESOURCE NEEDS AND OPPORTUNITIES**

### **Public Participation Activities in the Development of the Plan**

Beginning in June 2008, discussions with the council indicated the direction preferred to obtain community feedback within the ECC RC&D area. Meetings with conservation districts, county commissioners, community groups, and citizens were held in six locations across the area. News articles and fact sheets were updated to inform citizens about the activities of the RC & D program. A webpage was developed, and a survey was designed to collect input from citizens not only from those who attended meetings but to capture a response from those who did not. Council members distributed surveys to historical groups, county commissioners, farm organizations, and

senior citizens. The coordinator surveyed USDA partners during staff meetings at USDA Service Centers. These activities contributed to a summary of needs, concerns, and opportunities for the area. The Executive Council then reviewed and compiled responses from the area surveys, and one on one communication with citizens in each community. This database of information formed the basis of the area plan goals and objectives.

### **Summary of Findings by RC & D Program Element**

The objectives, goals and strategies in this revised Area Plan were developed to deal with problems and opportunities in the following general categories:

1. **Water Management** – Agricultural water shortages in the Ogallala Aquifer and Republican River Basin, closely followed by water quality improvement (concerns about farm chemical contamination), in addition to municipal water conservation as some rural towns face water shortages within the Area.
2. **Land Conservation** – Noxious weeds alternative treatments and conservation education were listed as important issues in the next 3-5 years. Removal of noxious tree species along the Republican River to address the Republican River compact with Colorado, Nebraska, and Kansas, was emphasized.
3. **Land Management** – Renewable energy development topped the list along with alternative ag opportunities such as biofuels, agritourism, and wind farm development were key topics.
4. **Community Development** – New business creation and retention and job creation were critical to maintaining a tax base. Declining populations and school enrollment is creating concerns of school closures and consolidation of schools across entire counties.
5. **Other** –Grant writing and grant research assistance was a need identified as important to small communities and organizations. The council will identify multiple resources available to communities and make this information available to the public to address this need.

## **GOALS OBJECTIVES AND STRATEGIES**

*(underlined values are linkages to the NRCS Strategic Plan)*

### **-WATER MANAGEMENT-**

**Goal 1: Sustain water quantity for rural users and protect water quality through good stewardship.**

**Objective 1: Conservation of Agricultural Water** (water management, connected landscapes)

**Strategies:** Cooperative conservation, Watershed approach

- A. Seek funds to assist irrigators to implement flow meter project on at least 20 wells in the Flagler Conservation District in 2009.
- B. Attend at least 2 Republican River watershed meetings annually to monitor compact compliance activities. (2009, 2010, 2011, 2013.)
- C. Partner with Burlington, Cheyenne, and Flagler Conservation Districts to host at least one irrigation field day utilizing the mobile irrigation lab in two counties in 2010.
- D. Encourage improved irrigation systems efficiency by developing grants from CSSCB for two conservation district cost share programs in 2009, 2010, and 2011.

**Objective 2: Identify rural water quality issues** *(water management, connected landscapes)*

**Strategies:** *cooperative conservation*

- A. Coordinate assistance and seek funds (as needed) to at least three storm water and/or sewer projects in the Area (Town of Kiowa, Town of Stratton, Town of Kit Carson) to reduce sediment and design safe outlets for erosion problems in 2009, 2010, 2011.
- B. Coordinate rural well water testing project in Lincoln and Cheyenne Counties in partnership with Colorado State University, Colorado Department of Public Health and Environment, High Plains, Prairie, Cheyenne Conservation Districts, and others to complete testing and improve education and BMPs for at least 20 rural well owners beginning coordination in 2009 with testing to begin in 2010 with continuation in 2011-2013.

**-LAND CONSERVATION-**

**Goal 1: Identify problems and utilize erosion control methods to reduce and contain sedimentation in communities**

**Objective 1: Expand Rural Partnerships and Address Sediment Concerns** *(soil quality, water management)*

**Strategies:** *Cooperative conservation, watershed approach*

- A. Create three individual local work groups with three CD Boards (Kiowa, Cheyenne, Burlington), NRCS, Colorado State University (CSU)

Extension Service and three communities (Stratton, Kit Carson, Kiowa) to inventory erosion, sedimentation, and associated issues with stormwater run off and past flooding concerns from adjacent rangeland. (2009, 2010)

**B.** Conduct one educational tour on erosion and water quality related issues (including storm water runoff) in each of three communities (Stratton, Kit Carson, Kiowa). (2009, 2010)

**C.** Seek funding source ( Rural Development, Department of Local Affairs, Colorado Water Conservation Board) for design and implementation funding to address stormwater flood concerns for three identified rural communities (Stratton, Kit Carson, Kiowa). (2009- 2010)

**Goal 2: Promote Best Management Practices for erosion control on cropland when growing alternative specialty crops related to development of biodiesel.**

**Objective 1: Increase knowledge and adoption of conservation tillage systems for low residue cropping systems** (*soil quality, air quality, energy conservation, connected landscapes*)

**Strategies: Cooperative conservation, market-based approach**

**A.** Continue work with Flagler CD, Town of Flagler, and five Tri County Biofuels (CIG) landowners to monitor planting methods of Camelina and Canola to develop planting guide. (2009-2010)

**B.** Develop information for at least one ‘fact sheet’ to be distributed as a planting guide for local landowners interested in planting canola and camelina in East Central Colorado region by March 2011. Partners will include Agricultural Research Service and Colorado State University.

**C.** Pursue at least one funding source (RBEG, RBOG) opportunity for a feasibility study to explore potential community scale biodiesel plant by 2012.

**D.** Coordinate first meeting to determine feasibility of biodiesel cooperative at Flagler, Colorado by 2013.

**GOAL 3: Expand markets for local food production and specialty items**

**Objective: Improve income stream to local food producers** (*connected landscapes, other*)

**Strategies: (Cooperative conservation, market based approach)**

A. Contact at least ten producers (including FFA organizations) to expand markets for locally grown agriculture to expand the High Plains Food COOP or other farmers market structure. By 2010.

B. Pursue funding source (Rural Development, Ag Marketing Service) for refrigerated/freezer trailer to deliver products to front range markets/schools) by 2011.

**Goal 4: Promote Control of Noxious Weeds in Riparian Zones**

**Objective 1: Increase knowledge of local landowners and county officials to the risk of productive land use lost due to noxious weed encroachment**

*(connected landscapes, other)*

**Strategies: Cooperative conservation, watershed approach**

A. Assist local partners (CD's NRCS, CSU Coop. Ext., Lincoln County) to host workshop for noxious weed identification along Big Sandy Riparian Area. Invite CSU weed specialist and insectary scientists to demonstrate chemical and biological control methods in 2009.

B. Work with local CD's, NRCS, landowners to establish monitoring sites for long horn and flea beetles for control of leafy spurge in 2009.

C. Assist conservation districts in the Big Sandy Watershed to seek funding through Colorado High Plains Invasive Program grant (and other sources) in 2009 for Big Sandy Leafy Spurge Alliance project to conduct inventory and offer cost-share program to local landowners in 2010.

D. Encourage local youth (FFA, 4H) to assist with mapping effort on 31 miles of Big Sandy watershed as volunteers utilizing GPS tools and develop learning opportunity through arcmap program in 2009 and 2010.

**-LAND MANAGEMENT-**

**Goal 1: Assist Communities in Renewable Energy Development**

**Objective: Create Regional Opportunities to discuss community development from renewable energy resources *(energy conservation, renewable energy, connected landscapes, other)***

**Strategies: cooperative conservation, market based approach**

- A. Coordinate the establishment of a regional steering committee for developing a renewable energy strategic plan in the East Central Region ( Cheyenne, Elbert, El Paso, Kit Carson, Lincoln Counties) in 2009.
- B. Explore funding options (REBG, RBOG) for development of renewable energy options (small wind, solar) in small communities for infrastructure for Seibert town hall (Kit Carson County), and Simla Assisted Living facility, and USDA Service Center/library in Simla (Elbert County) by 2010.
- C. Develop partnerships with energy consultants to facilitate funding opportunities to make ideas for renewable energy turn into projects (ICAST, Energy Associates, others) by 2010.
- D. Host at least two 'Green Expo' or energy efficiency related workshops in 2010 and 2011.
- E. Partner with at least five Conservation Districts to pursue cost-share funding for on-farm wind and solar demonstration projects (Double EI, Agate, Flagler, High Plains, Prairie) by 2013.

**Goal 2: Trained local workforce in 'green' technologies**

**Objective 1: Create curriculum and expand training opportunities for youth, others (*energy conservation, connected landscapes, other*)**

**Strategies: Cooperative conservation, market based approach**

- A. Promote 'Wind for Schools' program projects installation in 2010 for demonstration sized wind technology into the classroom (4 schools – Arriba-Flagler, Burlington, Kit Carson, Stratton) to foster interest in high school students.
- B. Generate partnership with Morgan Community College (others) to deliver energy audit technician training in two rural communities (Burlington and Limon) by 2012.
- C. Communicate with local electric cooperatives to determine future needs of workforce, especially related to proposed wind farm activities in east central region by 2011.
- D. Develop local partnerships to initiate, deliver, and promote at least one course providing training opportunities for wind turbine technicians from a local workforce by 2013.

## **-Community Development-**

### **Goal 1: Improve Community Facilities**

#### **Objective 1: Expand opportunities to retain youth in communities *(other)***

##### **Strategies: *cooperative conservation***

- A.** Assist three communities with parks, trails and recreation development (Hanover, Cheyenne Wells, Vona) by 2011.
- B.** Work with towns of Simla and Calhan, and partners on potential to expand broad band infrastructure to facilitate development for online school usage, improved infrastructure for emergency management and local citizens by 2012.

#### **Objective 2: Assist emergency services volunteers *(other)***

- A.** Meet with two local volunteer fire departments to develop funding possibilities (Pikes Peak Community Foundation, Gates Foundation, Rural Development for new buildings (Rush,Agate) by 2013.

### **Goal 2: Develop and promote historic tourism opportunities**

#### **Objectives 1: Preserve local historic buildings *(other)***

##### **Strategies: *cooperative conservation***

- A.** Identify Historical Sites/needs, nominate three for State registration (Flagler Theatre, Watters Hotel identified) 2009.
- B.** Coordinate strategy for funding using a regional effort to support local historical societies and/or individuals to begin work to preserve and/or restore six historic properties or collections by 2013.

#### **Objective 2: Preserve local collections *(other)***

- A.** Pursue foundation funding to assist local at least two historical societies on preservation issues such as overcoming 'data rot' – (cassette tape to digital etc.) by 2012.
- B.** Pursue three grants with foundations, corporations, state and federal Agencies or other funding sources. Provide grant research to local organizations with preservation activities by 2013.

### **Current and potential partnerships with USDA and others**

At the local level East Central Colorado RC&D Council has developed partnerships with seven NRCS Field Offices and eight conservation districts, four USDA Service Centers

with FSA Offices, Colorado State University (CSU) Extension, the Colorado Governors Energy Office (GEO), USDA Agricultural Research Service, seven area schools, four counties, East Central Council of Governments, and fifteen municipalities. Many community organizations such as Hugo Improvement Partnership, Flagler Community Development, and multiple historic preservation societies located across the RC & D area have served as project partners and support the RC & D council with voluntary dues.

### **Linkages to the NRCS Strategic Plan**

**Strategies:** cooperative conservation, watershed approach, market based approach.

**Objectives:** soil quality; water management; air quality, energy conservation, renewable energy, connected landscapes, and other.

## **Appendix A**

### **Issues from community group discussion and survey results July – December 2008**

**Agricultural tourism, water shortages, sustainability, alternative crops**  
**Adequate child care**  
**Community buildings/community center**  
**Community infrastructure - roads, water, sewer**  
**Community renewal – main street beautification**  
**Collaboration between communities on regional activities**  
**Economic development - attracts new businesses, create jobs**  
**Fire station buildings**  
**Historic preservation - buildings -Cemetery records/markers/maps**  
**Improve youth/adult involvement in community**  
**Noxious weed management and education**  
**Recreation - parks - trails/paths- recreation centers, expand recycling products**  
**Renewable energy development for sustainable communities – solar, wind, biofuels**  
**Retain youth – ‘grow your own’ professionals, job training**  
**Water resources future needs- quality water systems, waste water mgmt.**

**The top four needs and services identified that seem difficult to obtain by community organizations: (prioritized according to survey results)**

- ❖ **grant writing assistance**
- ❖ **grant research assistance**
- ❖ **fundraising assistance**
- ❖ **grant administration assistance**

**REQUIRED CLAUSES AND SIGNATURES**

The East Central Colorado RC&D Council agrees that the RC&D Program will be conducted in compliance with the non-discrimination provisions as contained in Title VI and VII of the Civil Rights Act of 1964 as amended, the Civil Rights Restoration Act of 1987 (Public Law 100-259) and other nondiscrimination statutes; namely, Section 504, of the Rehabilitation act of 1973, Title IX of the Education Amendments of 1972, the Age Discrimination Act of 1975 and in accordance with the regulations of the Secretary of Agriculture (7CFR-15, Subparts A and B) that provide that no person in the United States shall, on the ground of race, color, national origin, age, sex, religion, marital status, or handicap/disability be excluded from participation in, or be denied the benefits of or be otherwise subjected to discrimination under any program or activity receiving Federal financial (or technical) assistance from the U.S. Department of Agriculture or any agency thereof."

The East Central Colorado RC&D Council agrees that the signing of this document constitutes agreement to comply with federal laws concerning restrictions on lobbying, a drug-free workplace, and responsibilities for non-procurement, suspension, and debarment, and State review.

The East Central Colorado RC&D Council hereby adopts this RC&D Area Plan and agrees to use effectively the assistance provided by the U.S. Department of Agriculture to realize the goals and objectives outlined herein.

East Central Colorado RC&D Council, Inc.  
Colorado

By: \_\_\_\_\_ Chairman  
Richard Sears

By: \_\_\_\_\_ Vice-Chairman  
Jim Brewer

Attest: \_\_\_\_\_ Secretary/Treasurer  
Doris King

This action authorized at an official meeting of the East Central Colorado RC&D Council on December 3, 2009.

U.S. Department of Agriculture - Natural Resources Conservation Service

The State Conservationist hereby acknowledges the attached Plan of East Central Colorado RC& D, inc. as meeting the requirements under Public Law 97-98 to receive assistance from USDA.

Acknowledged by: \_\_\_\_\_, State Conservationist \_\_\_\_\_, 2009  
Allen Green Date